



Identserv Inc.

499 Thornall Street, Edison NJ, USA
Phone: 732 404 8350 www.identserv.com
Email: info@identserv.com

INSTALLING & CONFIGURING 'ORACLE INTERNET DIRECTORY 11G (Release1)'

Pramod Aravind

pramodsa@gmail.com
pramod.aravind@identserv.com

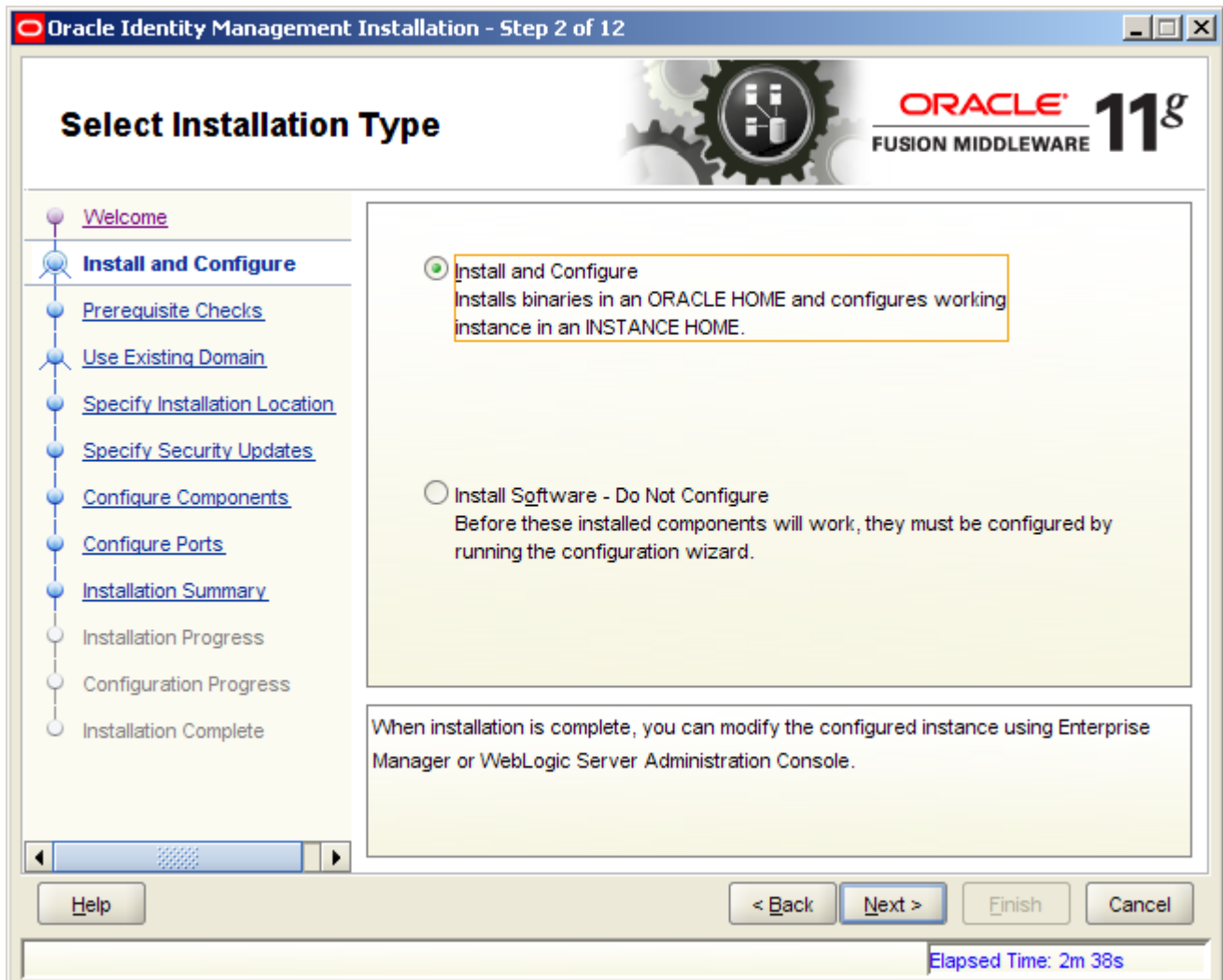
Assumptions & Prerequisites -

- It is assumed that the reader has an idea/understanding of the working of the components used in this implementation.
- This document covers the installation of 'Oracle Identity Management 11G Release 1' components - 'Oracle Internet Directory' and 'Oracle Virtual Directory'.
- This document is specific to this implementation at Identserv.
- The values that appear in the screenshots were as entered during the implementation, unless otherwise specified.
- This document can be used just as a reference.
- This document may/does not cover some of the basic steps/prerequisites related to each component(s).
- There may be further configuration changes after this document has been completed.
- Oracle WebLogic Server and Oracle Database should be installed before proceeding to the installation of 'Oracle Internet Directory'.

Start the Installer. Select 'Next' -



Select 'Install and Configure', and click 'Next' -



Select 'Create New Domain'.
Enter 'User Name', 'User Password', 'Domain Name'.
Click 'Next' -

Oracle Identity Management Installation - Step 4 of 12

Select Domain

ORACLE FUSION MIDDLEWARE **11g**

- Welcome
- Install and Configure
- Prerequisite Checks
- Create Domain**
- Specify Installation Location
- Specify Security Updates
- Configure Components
- Configure Ports
- Installation Summary
- Installation Progress
- Configuration Progress
- Installation Complete

Create New Domain

User Name:

User Password:

Confirm Password:

Domain Name:

Extend Existing Domain

Expand Cluster

Configure without a Domain

Elapsed Time: 3m 48s

'Accept Default Values' or Enter Values as per requirement.
Click 'Next' -

Oracle Identity Management Installation - Step 5 of 12

Specify Installation Location

ORACLE 11g
FUSION MIDDLEWARE

- Welcome
- Install and Configure
- Prerequisite Checks
- Create Domain
- Specify Installation Location**
- Specify Security Updates
- Configure Components
- Configure Ports
- Installation Summary
- Installation Progress
- Configuration Progress
- Installation Complete

Oracle Middleware Home Location: F:\VDM_11G_Apps\BEA\Middleware\

Oracle Home Directory: Oracle_IDM1

Weblogic Server Directory: F:\VDM_11G_Apps\BEA\Middleware\wls

Oracle Instance Location: F:\VDM_11G_Apps\BEA\Middleware\asi

Oracle Instance Name: asinst_1

The Oracle Instance name may only contain alphanumeric and underscore (_) characters, it must begin with an alphabetic (a-z or A-Z) character, and must be from 4 to 30 characters in length.

Elapsed Time: 4m 33s

Enter 'My Oracle Support' email/password, or select 'Next' -

Oracle Identity Management Installation - Step 6 of 12

Specify Security Updates

ORACLE 11g
FUSION MIDDLEWARE

Provide your email address to be informed of security issues, install the product and initiate configuration manager. [View details.](#)

Email:

Easier for you if you use your My Oracle Support email address/username.

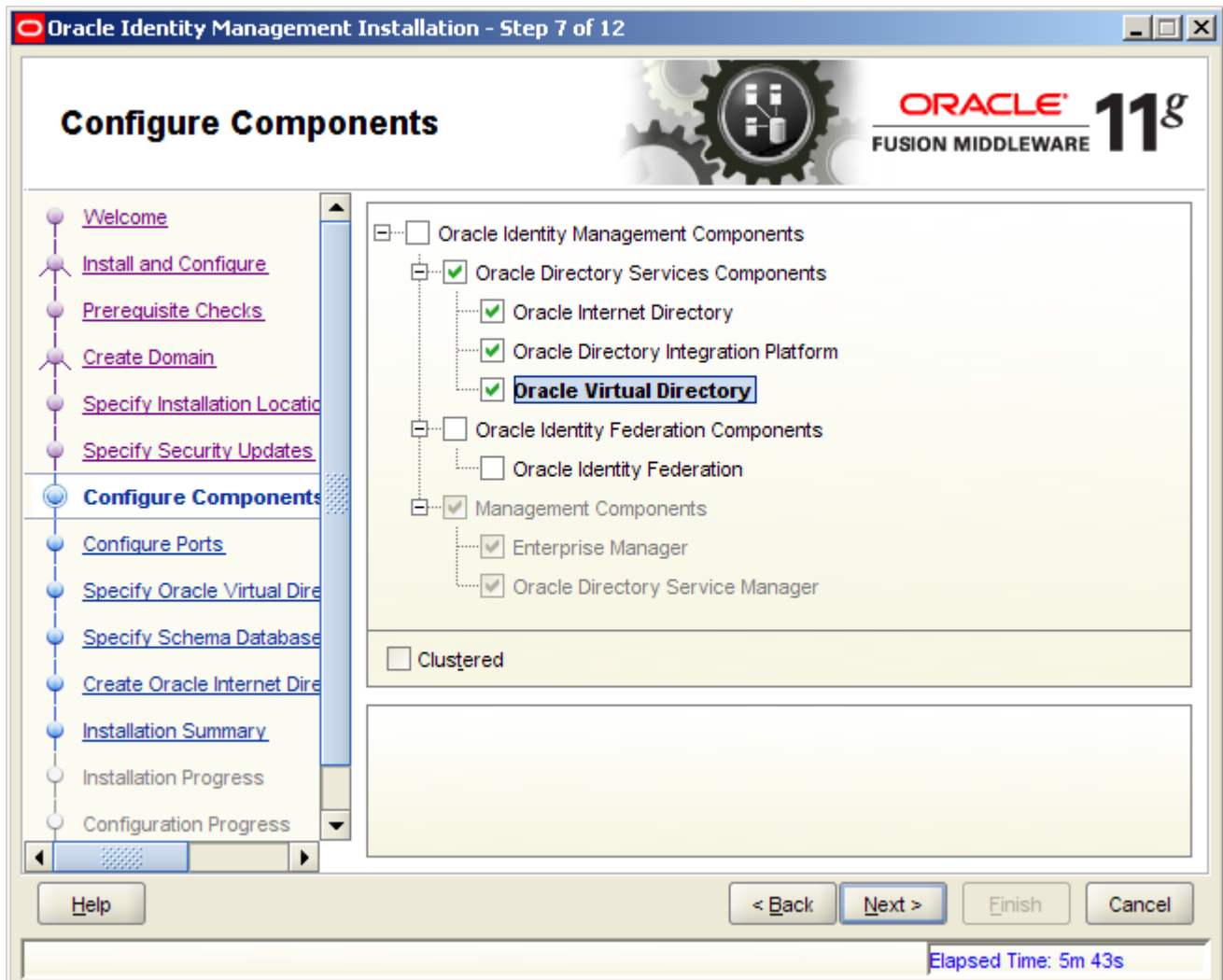
I wish to receive security updates via My Oracle Support.

My Oracle Support Password:

Help < Back Next > Finish Cancel

Elapsed Time: 5m 8s

Select components to be installed, and click 'Next' -



Select 'Auto Port Configuration', and click 'Next' -



Enter the 'OVD Namespace' and the administrator credentials.
Click 'Next' -

Oracle Identity Management Installation - Step 9 of 16

Specify Oracle Virtual Directory Information

ORACLE 11g
FUSION MIDDLEWARE

[Welcome](#)
[Install and Configure](#)
[Prerequisite Checks](#)
[Create Domain](#)
[Specify Installation Location](#)
[Specify Security Updates](#)
[Configure Components](#)
[Configure Ports](#)
Specify Oracle Virtual Directory Information
[Specify Schema Database](#)
[Create Oracle Internet Directory](#)
[Installation Summary](#)
Installation Progress
Configuration Progress

Client Listeners

LDAP v3 Name Space:

HTTP Web Gateway
 Secure

Oracle Virtual Directory Administrator

Administrator User Name:

Password:

Confirm Password:

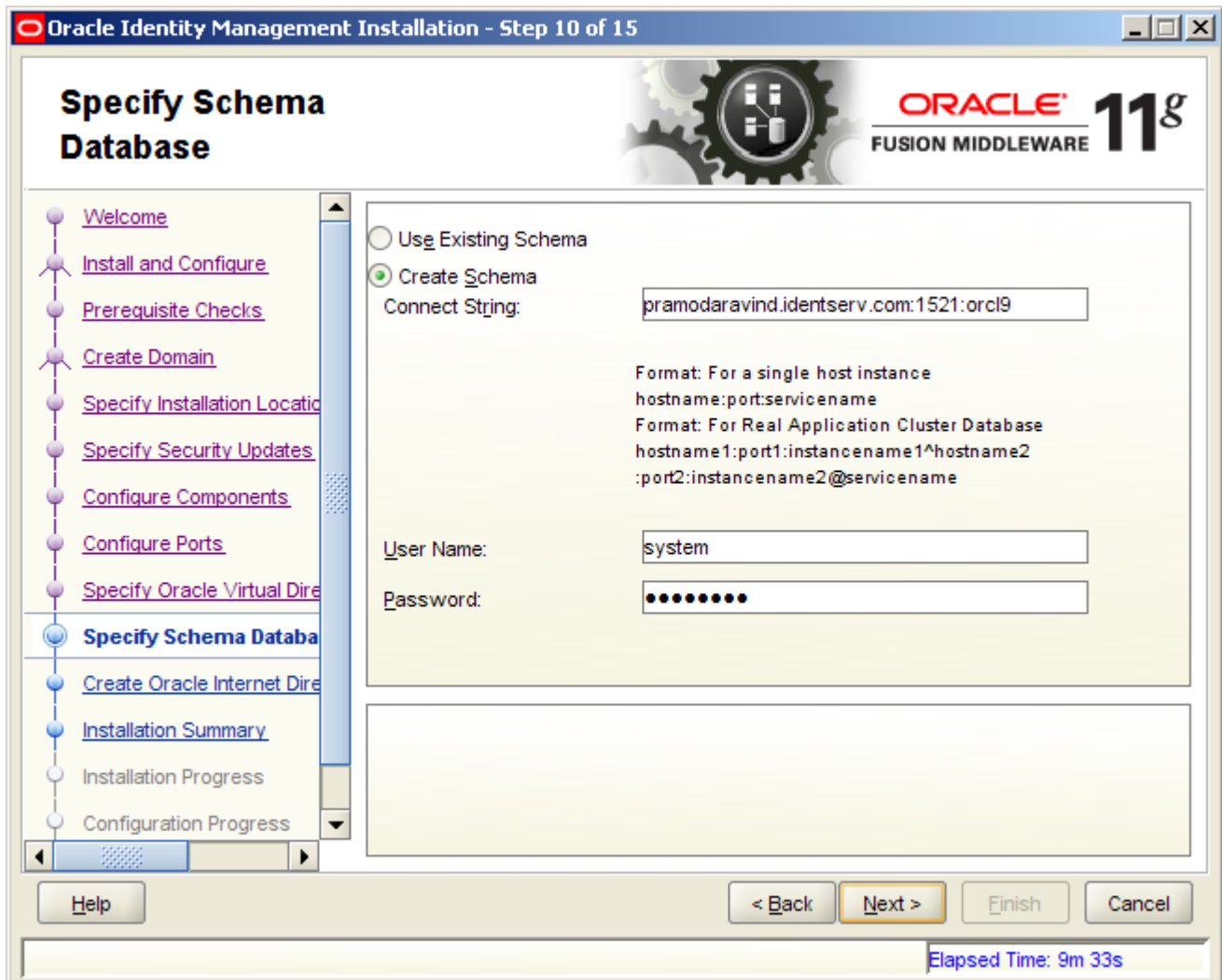
Configure Administrative Server in secure mode

Select the Secure field to enable the HTTP Web Gateway to be protected by SSL.

[Help](#) [< Back](#) [Next >](#) [Finish](#) [Cancel](#)

Elapsed Time: 38m 23s

Select 'Create Schema', Enter the 'Connect String', 'User Name', 'Password'.
Click 'Next' -



Enter the 'ODS Schema' and 'ODSSM Schema' password.
Click 'Next' -

Oracle Identity Management Installation - Step 11 of 16

Enter OID Passwords

ORACLE 11g
FUSION MIDDLEWARE

- Welcome
- Install and Configure
- Prerequisite Checks
- Create Domain
- Specify Installation Location
- Specify Security Updates
- Configure Components
- Configure Ports
- Specify Oracle Virtual Directory
- Specify Schema Database
- Enter OID Passwords**
- Create Oracle Internet Directory
- Installation Summary
- Installation Progress

ODS Schema Password:

Confirm ODS Schema Password:

ODSSM Schema Password:

Confirm ODSSM Schema Password:

Help < Back **Next >** Finish Cancel

Elapsed Time: 36m 23s

Enter the 'Oracle Internet Directory' Realm details -

Oracle Identity Management Installation - Step 12 of 16

Create Oracle Internet Directory

ORACLE 11g
FUSION MIDDLEWARE

Oracle Internet Directory Information

Realm:

Administrator User Name:

Administrator Password:

Confirm Password:

Help < Back Next > Finish Cancel

Elapsed Time: 37m 13s

Review, and click 'Install' -

The screenshot displays the 'Oracle Identity Management Installation - Step 13 of 16' window. The title bar includes the Oracle logo and 'FUSION MIDDLEWARE 11g'. The main content area is titled 'Installation Summary' and features a left-hand navigation pane with a vertical sequence of steps: Welcome, Install and Configure, Prerequisite Checks, Create Domain, Specify Installation Location, Specify Security Updates, Configure Components, Configure Ports, Specify Oracle Virtual Directory, Specify Schema Database, Enter OID Passwords, Create Oracle Internet Directory, **Installation Summary** (highlighted), and Installation Progress. The main pane shows a tree view under 'Type: Install and Configure' with the following details:

- Location**
 - Oracle Middleware Home Location: F:\VDM_11G_Apps\BEA\Middleware
 - Oracle Home Location: F:\VDM_11G_Apps\BEA\Middleware\Oracle_IDM1
 - Oracle Instance Location: F:\VDM_11G_Apps\BEA\Middleware\asinst_1
 - Oracle Instance Name: asinst_1
- Disk Space**
 - Required: 2040 MB
 - Available: 19843 MB
 - Free After Install: 17803 MB
- Applications Selected For Install**
 - Oracle Internet Directory

Below the tree view is a 'Save Response File:' label and a 'Save' button. A text box contains instructions: 'To change this configuration before installing, select the topic you want to change in the pane on the left. To install this configuration, select Install.' The bottom of the window features a 'Help' button, '< Back' and 'Next >' navigation buttons, an 'Install' button, and a 'Cancel' button. The status bar at the bottom right shows 'Elapsed Time: 36m 58s'.

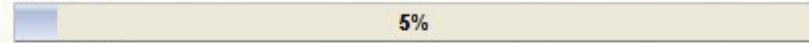
Installation Progress



ORACLE **11g**
FUSION MIDDLEWARE

- Configure Ports
- Specify Oracle Virtual Directory
- Specify Schema Database
- Enter OID Passwords
- Create Oracle Internet Directory
- Installation Summary
- Installation Progress**

Progress



Copying Files ..

Install Log C:\Program Files\Oracle\Inventory\logs\install2009-07-23_01-54-55PM.log

Starting File Copy

Oracle Fusion Middleware

Extreme Productivity

ORACLE

Help

< Back

Next >

Finish

Cancel

Elapsed Time: 41m 43s

Installation Progress



ORACLE **11g**
FUSION MIDDLEWARE

- Configure Ports
- Specify Oracle Virtual Directory
- Specify Schema Database
- Enter OID Passwords
- Create Oracle Internet Directory
- Installation Summary
- Installation Progress**

Progress



Setting up ..

Install Log C:\Program Files\Oracle\Inventory\logs\install2009-07-23_01-54-55PM.log

Setting Up: SQL*Plus 11.1.0.7.0
Setting Up: Oracle Identity Management Suite 11.1.1.1.0
Setting Up: Oracle Identity Management 11g 11.1.1.1.0
Setup Completed



Help

< Back

Next >

Finish

Cancel

Elapsed Time: 51m 38s

Configuration Progress



- Install and Configure
- Prerequisite Checks
- Create Domain
- Specify Installation Location
- Specify Security Updates
- Configure Components
- Configure Ports
- Specify Oracle Virtual Directory
- Specify Schema Database
- Enter OID Passwords
- Create Oracle Internet Directory
- Installation Summary
- Installation Progress
- Configuration Progress**

Configuration Tools

Name	Progress
Bootstrap Domain Configuration	31%
Create Domain	Success
Create ODS Managed Server	Success
Apply Java Required Files	Success
Apply EM Template	In Progress
Restart Domain	Recommended
Extend JRF template	Recommended

Buttons:

Configuration Log Location: C:\Program Files\Oracle\Inventory\logs\install2009-07-23_01-54-55PM.log

- Bootstrap Domain Configuration
- Configure Oracle Identity Management Components

Configuration Progress



- Install and Configure
- Prerequisite Checks
- Create Domain
- Specify Installation Location
- Specify Security Updates
- Configure Components
- Configure Ports
- Specify Oracle Virtual Directory
- Specify Schema Database
- Enter OID Passwords
- Create Oracle Internet Directory
- Installation Summary
- Installation Progress
- Configuration Progress**

Configuration Tools

Name	Progress
<input type="checkbox"/> Apply EM Template	✓ Success
<input type="checkbox"/> Restart Domain	✓ Success
<input type="checkbox"/> Extend JRF template	✓ Success
<input type="checkbox"/> Start Managed Servers	✓ Success
<input type="checkbox"/> Create ASInstance	✓ Success
<input type="checkbox"/> Create Enterprise Manager Agent	✓ Success
<input type="checkbox"/> <input checked="" type="checkbox"/> Configure Oracle Identity Management Components	0%

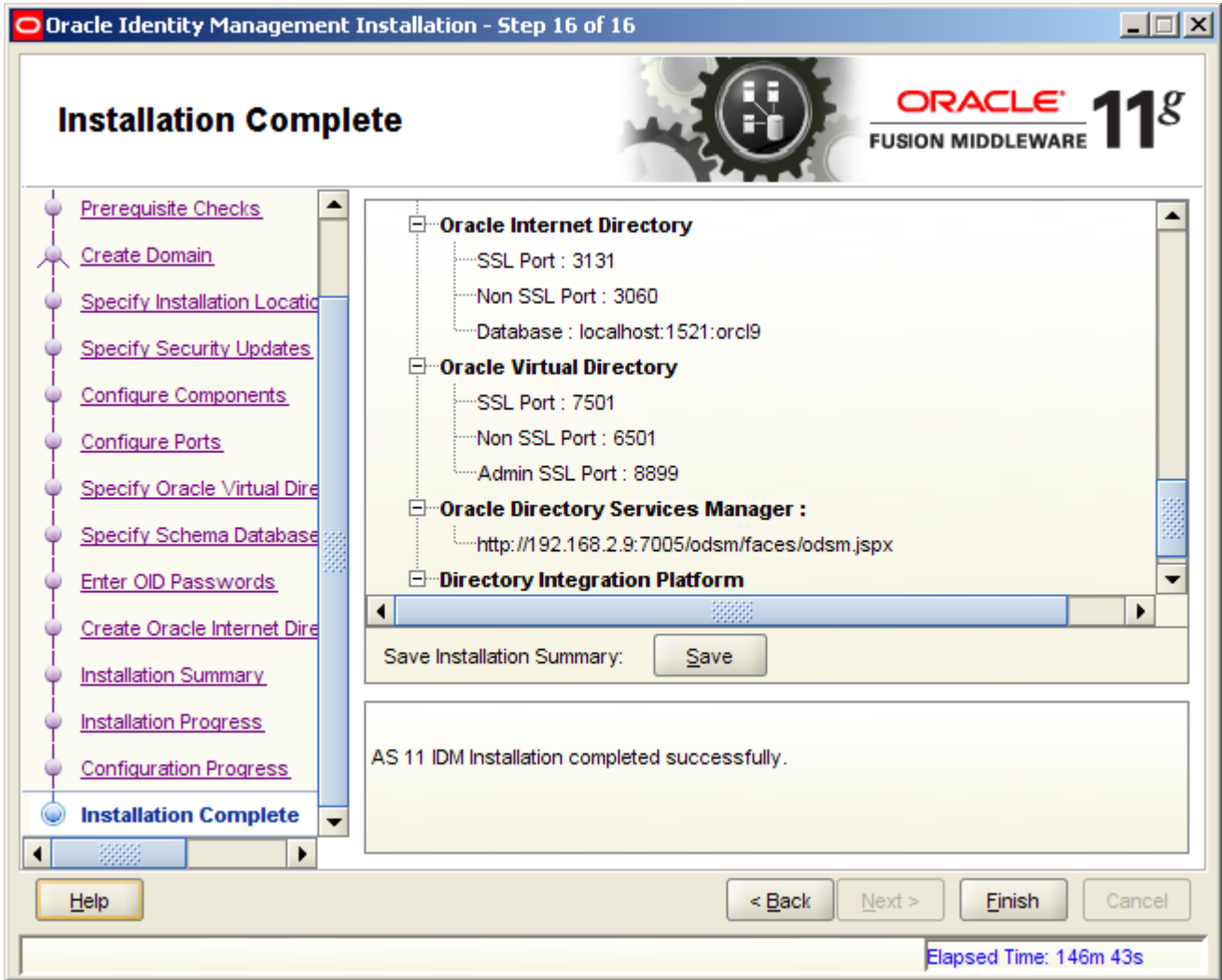
Abort Retry Continue

Configuration Log Location: C:\Program Files\Oracle\Inventory\logs\install2009-07-23_01-54-55PM.log

- ✓ Bootstrap Domain Configuration
- Configure Oracle Identity Management Components

Help < Back Next > Finish Cancel

Elapsed Time: 86m 58s

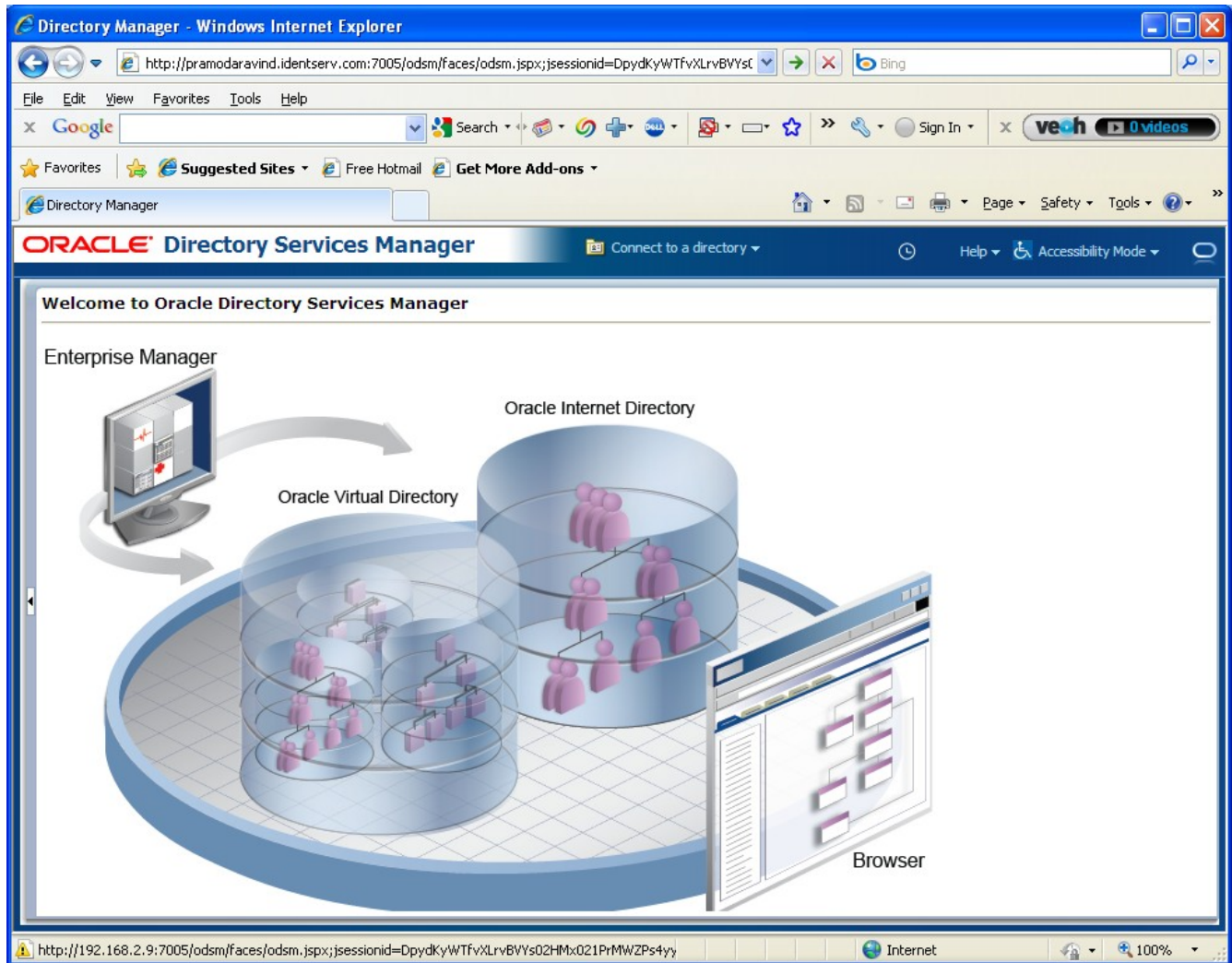


- - End Of Installation

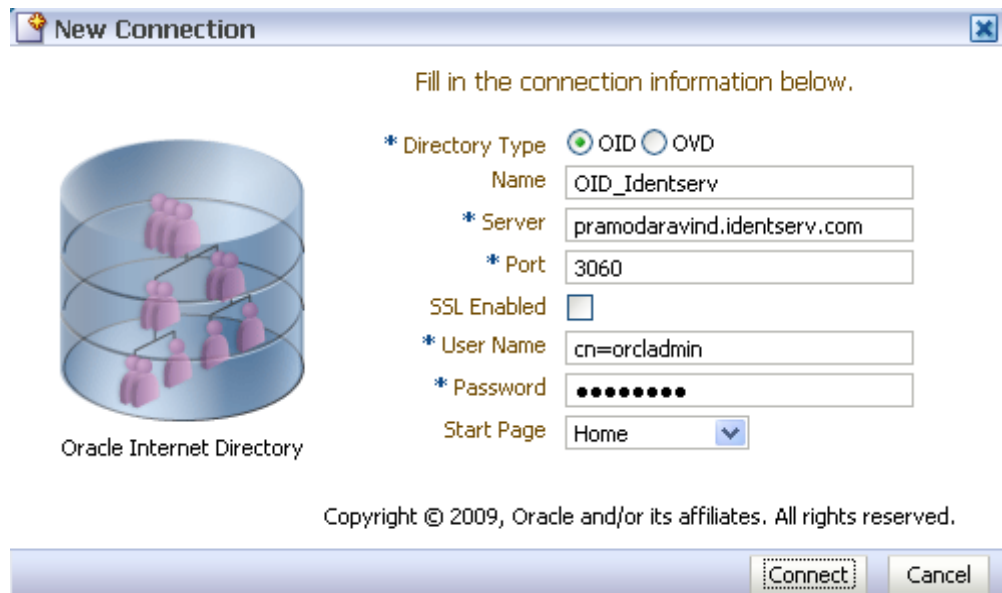
Post Installation & Configuration -

Access the 'Oracle Directory Services Manager' through 'http://<host>:<port>/odsm/faces/odsm.jspx'

Select 'Connect to a directory' -

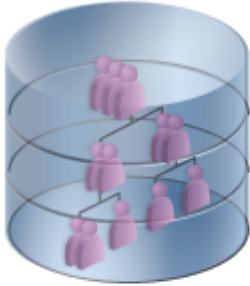


Select 'OID' as the 'Directory Type', and enter the connection information -
Click 'Connect' -



New Connection

Fill in the connection information below.

 Oracle Internet Directory

* Directory Type OID OVD

Name

* Server

* Port

SSL Enabled

* User Name

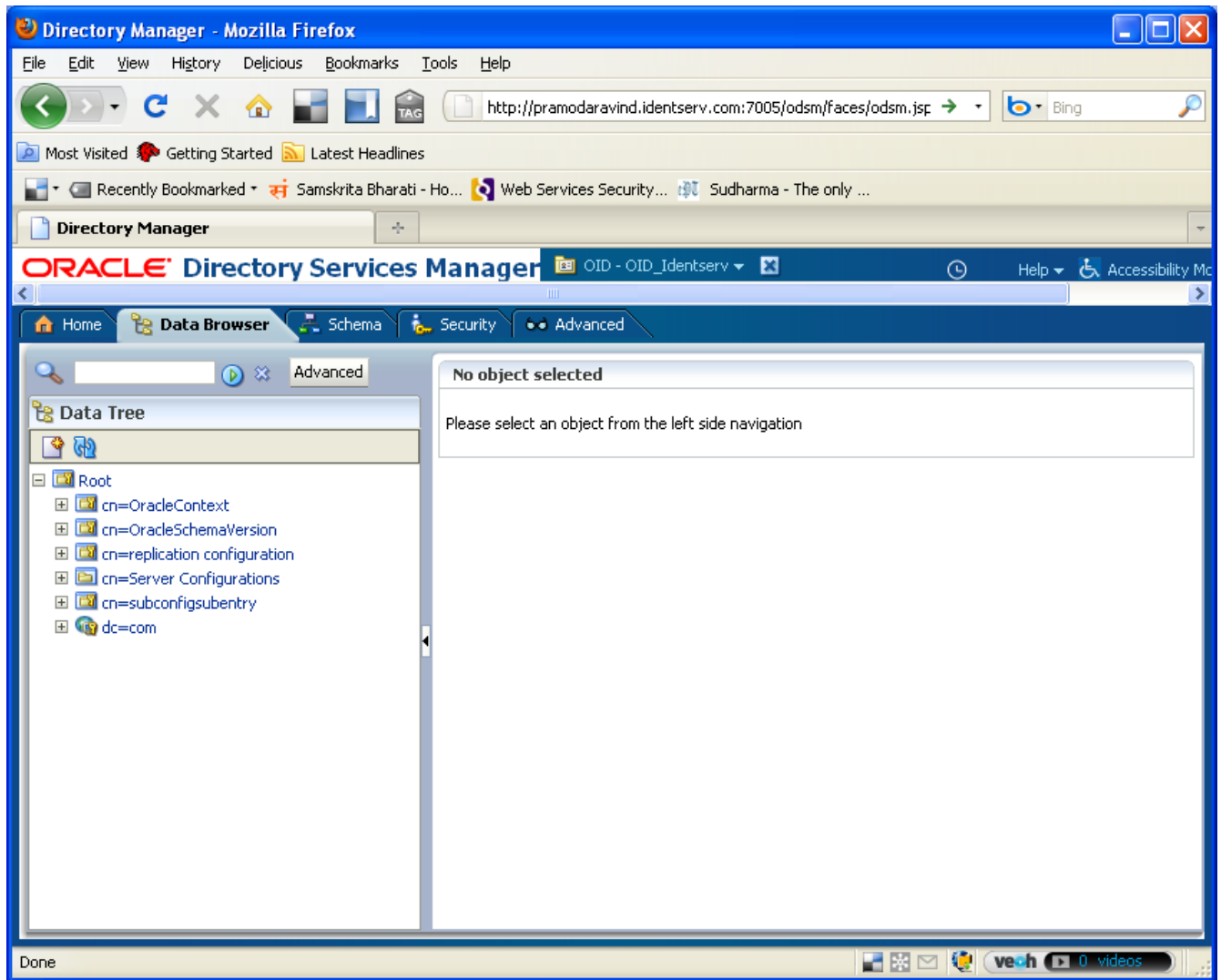
* Password

Start Page

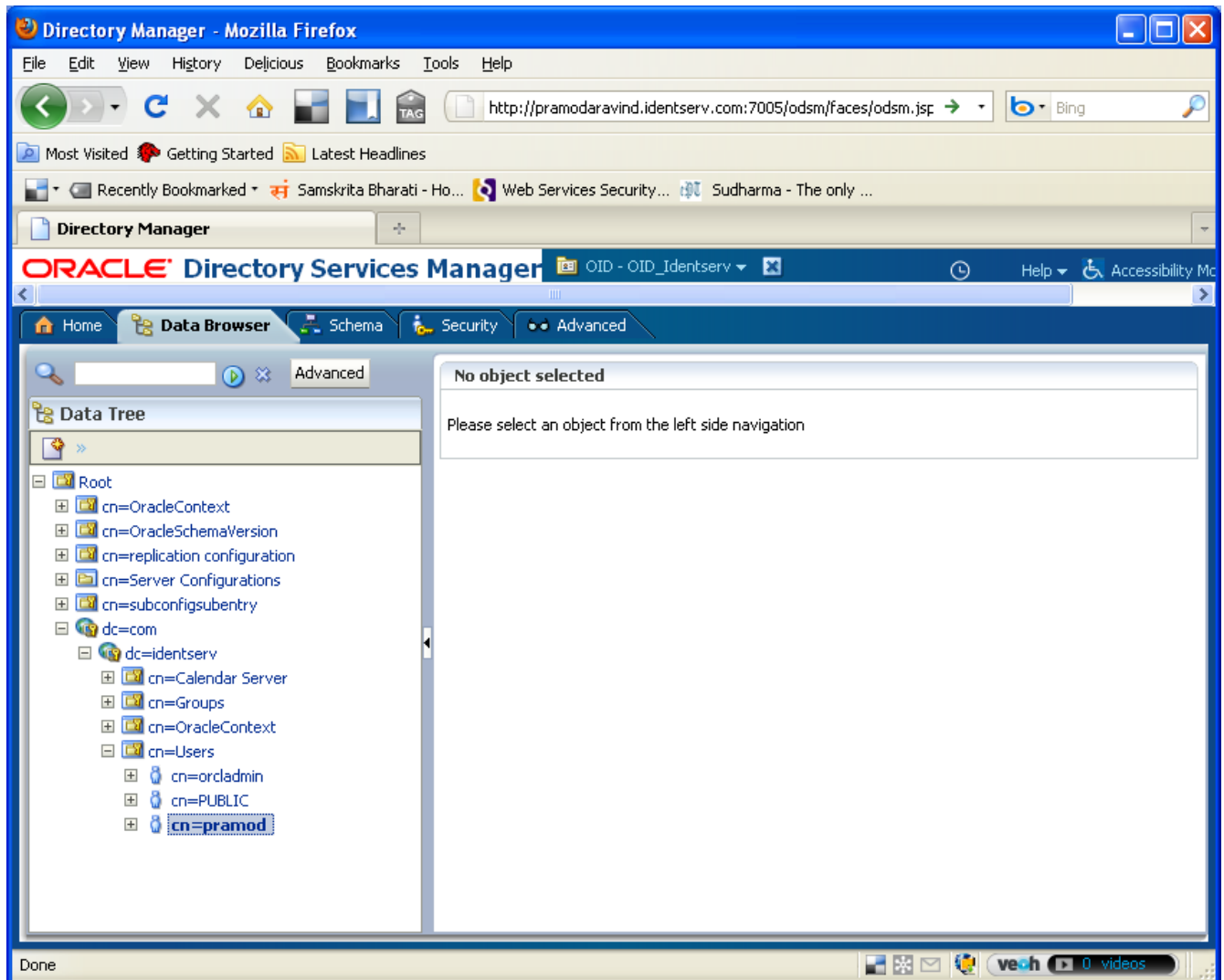
Copyright © 2009, Oracle and/or its affiliates. All rights reserved.

Connect Cancel

'Data Browser' tab -



Realm -



Directory Manager - Mozilla Firefox

File Edit View History Delicious Bookmarks Tools Help

http://pramodaravind.identserv.com:7005/odsm/faces/odsm.jsp

Most Visited Getting Started Latest Headlines

Recently Bookmarked Samskrita Bharati - Ho... Web Services Security... Sudharma - The only ...

Directory Manager

ORACLE Directory Services Manager

Home Data Browser Schema Security Advanced

Data Tree

- Root
 - cn=OracleContext
 - cn=OracleSchemaVersion
 - cn=replication configuration
 - cn=Server Configurations
 - cn=subconfigsentry
 - dc=com
 - dc=identserv
 - cn=Calendar Server
 - cn=Groups
 - cn=OracleContext
 - cn=Users
 - cn=orcladmin
 - cn=PUBLIC
 - cn=pramod

pramod

Apply Revert

Distinguished Name: cn=pramod,cn=Users,dc=identserv,dc=com


Created by: cn=orcladmin Modified by: cn=orcladmin

Created at: July 23, 2009 5:28:41 PM CDT Modified at: July 23, 2009 5:28:41 PM CDT

Person Attributes Subtree Access Local Access

Basic User Information

User Name	pramod
First Name	<input type="text" value="pramod"/>
Last Name	<input type="text" value="aravind"/>
Title	<input type="text"/>
Manager	<input type="text"/>
Employee Number	<input type="text"/>



Transferring data from 192.168.2.9...

veeh 0 videos

Directory Manager - Mozilla Firefox

File Edit View History Delicious Bookmarks Tools Help

http://pramodaravind.identserv.com:7005/odsm/faces/odsm.jsp

Most Visited Getting Started Latest Headlines

Recently Bookmarked Samskrita Bharati - Ho... Web Services Security... Sudharma - The only ...

Directory Manager

ORACLE Directory Services Manager

Home Data Browser Schema Security Advanced

Attributes

Enter a keyword to search. Keyword supports pattern matching (* and ?).

Please select an object from the left side navigation

Name
SubRegistrySubentry
accessDirective
addOrcluserV2ToADUsers
aliasedObjectName
altServer
assistant
associatedDomain
associatedName
attributeTypes
attributemap
audio
authPassword
authenticationmethod

Object Classes

Syntaxes

Matching Rules

Content Rules

Done

veeh 0 videos

Directory Manager - Mozilla Firefox

File Edit View History Delicious Bookmarks Tools Help

http://pramodaravind.identserv.com:7005/odsm/faces/odsm.jsp

Most Visited Getting Started Latest Headlines

Recently Bookmarked Samskrita Bharati - Ho... Web Services Security... Sudharma - The only ...

Directory Manager

ORACLE Directory Services Manager

OID - OID_Identserv

Home Data Browser Schema Security Advanced

Access Control

No object selected

Please select an object from the left side navigation

Name
cn=Attribute Configuration
cn=Attribute Configuration
cn=Calendar
cn=Calendar
cn=Calendar Server
cn=CommonAddressBook
cn=CommonAddressBook
cn=Computers
cn=Computers
cn=CRLAdmins
cn=CRLAdmins
cn=CRLValidation
cn=CRLValidation
cn=DAS
cn=DAS
cn=DBServers
cn=DBServers
cn=Discoverer

Password Policy

Password Verifier

Done

veeh 0 videos

Directory Manager - Mozilla Firefox

File Edit View History Delicious Bookmarks Tools Help

http://pramodaravind.identserv.com:7005/odsm/faces/odsm.jsp

Most Visited Getting Started Latest Headlines

Recently Bookmarked Samskrita Bharati - Ho... Web Services Security... Sudharma - The only ...

Directory Manager

ORACLE Directory Services Manager

Home Data Browser Schema Security Advanced

Plug-in

Name
oidexplg_bind_ad
oidexplg_bind_edirectory
oidexplg_bind_iplanet
oidexplg_bind_opendap
oidexplg_compare_ad
oidexplg_compare_edirectory
oidexplg_compare_iplanet
oidexplg_compare_opendap

Change Log

Garbage Collection

Attribute Uniqueness

Server Chaining

No object selected

Please select an object from the left side navigation

http://192.168.2.9:7005/odsm/faces/odsm.jsp?_adf.ctrl-state=1cxj9cf5hn_9#

veeh 0 videos